

检测报告 Test Report

报告编号 SCL01J007840001E
Report No. SCL01J007840001E

第 1 页 共 9 页
Page 1 of 9

申请单位 深圳市源磊科技有限公司
Applicant SHENZHEN RUNLITE TECHNOLOGY CO.,LTD

地 址 广东深圳市宝安区松岗街道潭头社
区第四工业区 A15 栋
Address BUILDING A15, TANTOU THE 4TH INDUSTRIAL
ESTATE, SONGGANG TOWN, BAOAN DISTRICT, SHENZHEN,
CHINA

以下测试之样品及样品信息由申请者提供并确认
The following sample(s) and sample information was/were submitted and identified by/on the
behalf of the client

| | |
|---|---|
| 样品名称 Sample Name | SMD LED SMD LED |
| 样品接收日期 Sample Received Date | 2017. 02. 20 Feb. 20, 2017 |
| 样品检测日期 Testing Period | 2017. 02. 20—2017. 02. 24 Feb. 20, 2017 to Feb. 24, 2017 |
| 检测要求 Test Requested | 请参见下页。 Please refer to the following page(s). |
| 检测依据/检测结果 Test Method/Test Result(s) | 请参见下页。 Please refer to the following page(s). |

主 检 罗浩香
Tested by 罗浩香
批 准 刘少蔚
Approved by 刘少蔚
CTI 技术经理 Technical Manager

审 核 肖佳
Reviewed by 肖佳
日 期 2017.02.24
Date 2017.02.24

华测检测认证集团股份有限公司
Centre Testing International Group Co.,Ltd.

广东省深圳市宝安区70区鸿威工业园
Hongwei Industrial Zone, Bao'an 70 District, Shenzhen, Guangdong, China

No. R169568213

检测报告 Test Report

报告编号 SCL01J007840001E
Report No. SCL01J007840001E

第 2 页 共 9 页
Page 2 of 9

结论 Conclusion

| 测试样品 Tested Sample | 依据指令 According to directive | 结果 Result |
|--------------------------|--|--------------|
| 提交样品 Submitted Sample | 欧盟RoHS指令2011/65/EU及其修订指令 (EU) 2015/863 RoHS Directive 2011/65/EU with amendment (EU) 2015/863 | 符合 Pass |

符合表示检测结果满足欧盟RoHS指令2011/65/EU及其修订指令(EU) 2015/863要求的限值。
Pass means that the results shown on the report comply with the limits set by RoHS Directive 2011/65/EU with amendment (EU) 2015/863.

检测报告 Test Report

报告编号 SCL01J007840001E
Report No. SCL01J007840001E

第 3 页 共 9 页
Page 3 of 9

检测要求

根据客户要求, 对所提交样品中的铅(Pb), 镉(Cd), 汞(Hg), 六价铬(Cr(VI)), 多溴联苯(PBBs), 多溴二苯醚(PBDEs), 邻苯二甲酸酯(DBP, BBP, DEHP, DIBP)进行测试。

Test Requested

As specified by client, to test Lead (Pb), Cadmium (Cd), Mercury (Hg), Hexavalent Chromium(Cr(VI)), Polybrominated Biphenyls(PBBs), Polybrominated Diphenyl Ethers(PBDEs), Phthalates(DBP, BBP, DEHP, DIBP) in the submitted sample(s).

检测依据 Test Method

| 测试项目 Test Item(s) | 测试方法 Test Method | 测试仪器 Measured Equipment(s) |
|---|---|-------------------------------|
| 铅(Pb) Lead (Pb) | IEC 62321-5: 2013 Ed. 1. 0 | ICP-OES |
| 镉(Cd) Cadmium (Cd) | IEC 62321-5: 2013 Ed. 1. 0 | ICP-OES |
| 汞(Hg) Mercury (Hg) | IEC 62321-4: 2013 Ed. 1. 0 | ICP-OES |
| 六价铬(Cr(VI)) Hexavalent Chromium(Cr(VI)) | IEC 62321: 2008 Ed. 1 Annex C | UV-Vis |
| 多溴联苯(PBBs) Polybrominated Biphenyls(PBBs) | IEC 62321-6: 2015 | GC-MS |
| 多溴二苯醚(PBDEs) Polybrominated Diphenyl Ethers(PBDEs) | IEC 62321-6: 2015 | GC-MS |
| 邻苯二甲酸酯(DBP, BBP, DEHP, DIBP) Phthalates(DBP, BBP, DEHP, DIBP) # | 参考IEC 62321-8 CDV Refer to IEC 62321-8 CDV | GC-MS |

检测报告 Test Report

报告编号 SCL01J007840001E
Report No. SCL01J007840001E

第 4 页 共 9 页
Page 4 of 9

检测结果 Test Result(s)

| 测试项目 Tested Item(s) | 结果 Result | 方法检出限 MDL | 限值 Limit |
|---|--------------|--------------|-------------|
| 铅(Pb) Lead (Pb) | N.D. | 2 mg/kg | 1000 mg/kg |
| 镉(Cd) Cadmium (Cd) | N.D. | 2 mg/kg | 100 mg/kg |
| 汞(Hg) Mercury (Hg) | N.D. | 2 mg/kg | 1000 mg/kg |
| 六价铬(Cr(VI)) Hexavalent Chromium (Cr(VI)) | N.D. | 2 mg/kg | 1000 mg/kg |

| 测试项目 Tested Item(s) | 结果 Result | 方法检出限 MDL | 限值 Limit |
|--|--------------|--------------|-------------|
| 多溴联苯(PBBs) Polybrominated Biphenyls(PBBs) | | | |
| 一溴联苯 Monobromobiphenyl | N.D. | 5 mg/kg | 1000 mg/kg |
| 二溴联苯 Dibromobiphenyl | N.D. | 5 mg/kg | |
| 三溴联苯 Tribromobiphenyl | N.D. | 5 mg/kg | |
| 四溴联苯 Tetrabromobiphenyl | N.D. | 5 mg/kg | |
| 五溴联苯 Pentabromobiphenyl | N.D. | 5 mg/kg | |
| 六溴联苯 Hexabromobiphenyl | N.D. | 5 mg/kg | |
| 七溴联苯 Heptabromobiphenyl | N.D. | 5 mg/kg | |
| 八溴联苯 Octabromobiphenyl | N.D. | 5 mg/kg | |
| 九溴联苯 Nonabromobiphenyl | N.D. | 5 mg/kg | |
| 十溴联苯 Decabromobiphenyl | N.D. | 5 mg/kg | |

检测报告 Test Report

报告编号 SCL01J007840001E
Report No. SCL01J007840001E

第 5 页 共 9 页
Page 5 of 9

| 测试项目 Tested Item(s) | 结果 Result | 方法检出限 MDL | 限值 Limit |
|--|--------------|--------------|-------------|
| 多溴二苯醚 (PBDEs) Polybrominated Diphenyl Ethers(PBDEs) | | | |
| 一溴二苯醚 Monobromodiphenyl ether | N.D. | 5 mg/kg | 1000 mg/kg |
| 二溴二苯醚 Dibromodiphenyl ether | N.D. | 5 mg/kg | |
| 三溴二苯醚 Tribromodiphenyl ether | N.D. | 5 mg/kg | |
| 四溴二苯醚 Tetrabromodiphenyl ether | N.D. | 5 mg/kg | |
| 五溴二苯醚 Pentabromodiphenyl ether | N.D. | 5 mg/kg | |
| 六溴二苯醚 Hexabromodiphenyl ether | N.D. | 5 mg/kg | |
| 七溴二苯醚 Heptabromodiphenyl ether | N.D. | 5 mg/kg | |
| 八溴二苯醚 Octabromodiphenyl ether | N.D. | 5 mg/kg | |
| 九溴二苯醚 Nonabromodiphenyl ether | N.D. | 5 mg/kg | |
| 十溴二苯醚 Decabromodiphenyl ether | N.D. | 5 mg/kg | |

检测报告 Test Report

报告编号 SCL01J007840001E
Report No. SCL01J007840001E

第 6 页 共 9 页
Page 6 of 9

| 测试项目 Tested Item(s) | 结果 Result | 方法检出限 MDL | 限值 Limit |
|---|--------------|--------------|-------------|
| 邻苯二甲酸酯 Phthalates[#] | | | |
| 邻苯二甲酸二正丁酯(DBP) Dibutyl phthalate(DBP) CAS#:84-74-2 | N.D. | 50 mg/kg | 1000 mg/kg |
| 邻苯二甲酸丁基苄酯(BBP) Butylbenzyl phthalate(BBP) CAS#:85-68-7 | N.D. | 50 mg/kg | 1000 mg/kg |
| 邻苯二甲酸二(2-乙基己基)酯(DEHP) Di-2-ethylhexyl phthalate(DEHP) CAS#:117-81-7 | N.D. | 50 mg/kg | 1000 mg/kg |
| 邻苯二甲酸二异丁酯(DIBP) Diisobutyl phthalate(DIBP) CAS#:84-69-5 | N.D. | 50 mg/kg | 1000 mg/kg |

测试样品/部位描述 LED (整体测试)
Tested Sample/Part Description LED(Tested as a whole)

备注: -对于检测铅, 镉, 汞之样品已完全溶解。
-按照目前手段, 样品无法进一步拆分, 样品整体测试, 测试结果不代表整体测试样品中任何一种单一材质的含量。
-N.D. = 未检出 (小于方法检出限)

Remark: -The sample(s) had been dissolved totally tested for Lead, Cadmium, Mercury.
-The sample(s) was tested as a whole, because it's impossible to disassemble or separate it by current equipment and technology. The result(s) shown on this report may be different from the content of any homogeneous material.

-MDL = Method Detection Limit
-N.D. = Not Detected (<MDL)
-mg/kg = ppm = parts per million

注释: -[#]表示该项目/方法不在 CNAS 认可范围内。
Note: -[#] indicates the item(s)/method(s) is (are) not in CNAS accreditation scope.

检测报告 Test Report

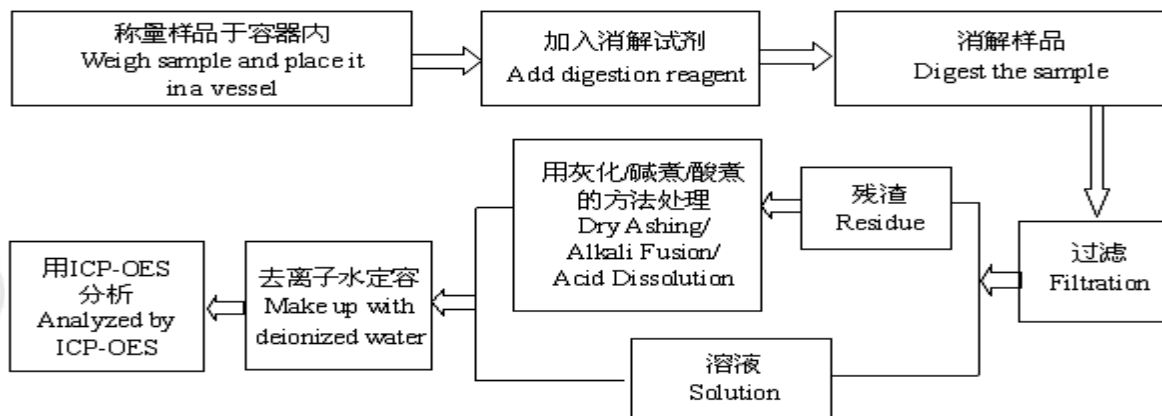
报告编号 SCL01J007840001E
Report No. SCL01J007840001E

第 7 页 共 9 页
Page 7 of 9

检测流程 Test Process

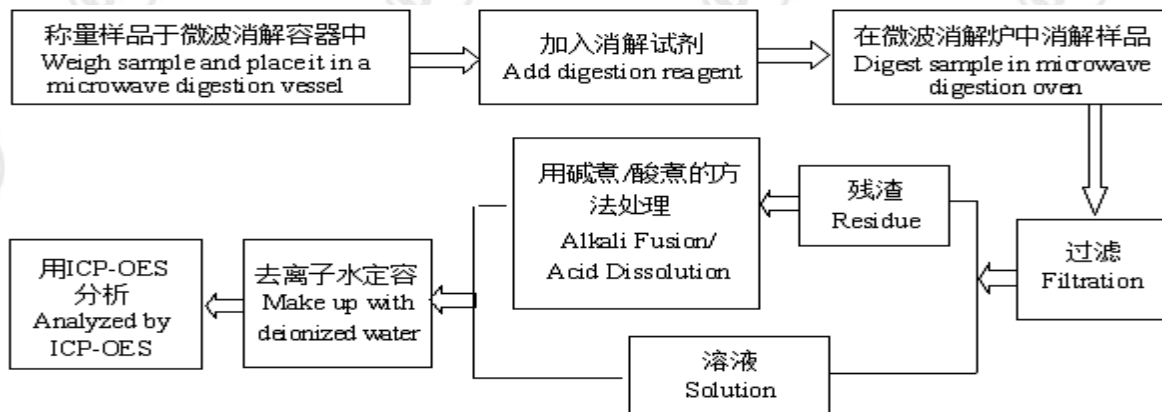
1. 铅(Pb), 镉(Cd)

Lead (Pb), Cadmium (Cd)



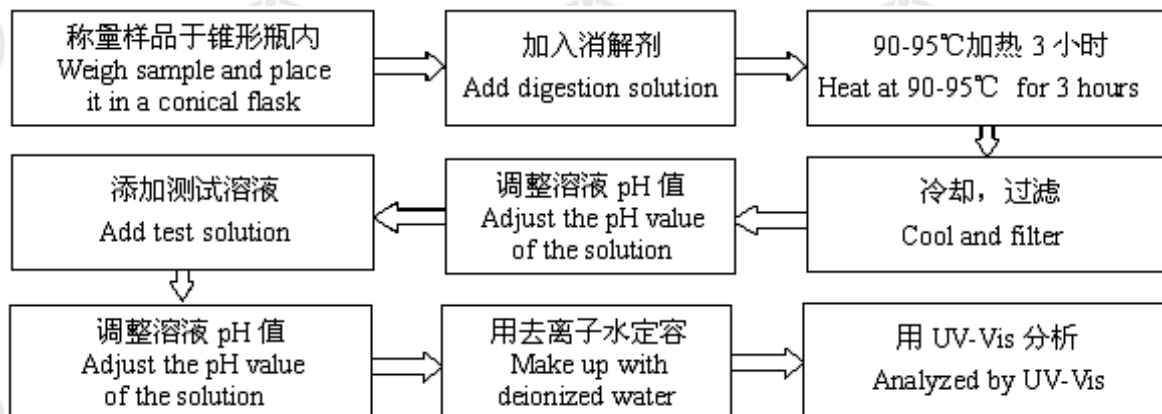
2. 汞(Hg)

Mercury (Hg)



3. 六价铬(Cr(VI))

Hexavalent Chromium(Cr(VI))



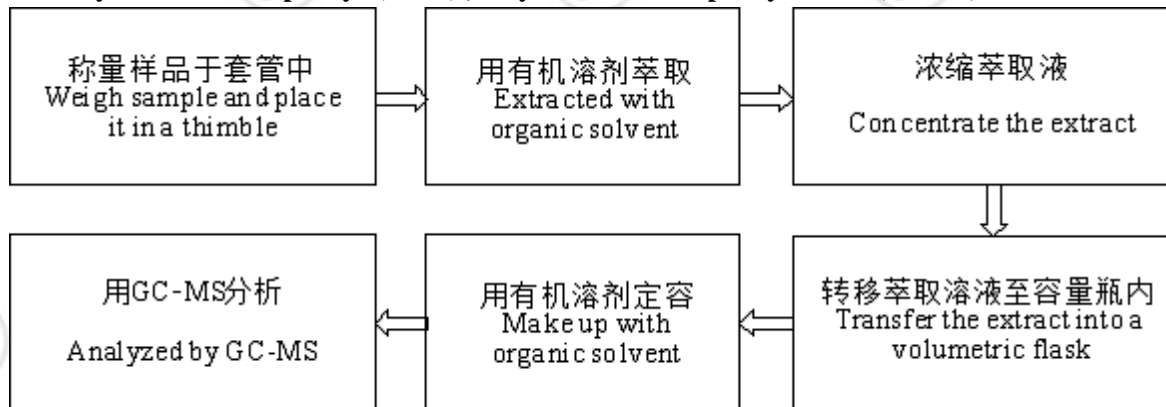
检测报告 Test Report

报告编号 SCL01J007840001E
Report No. SCL01J007840001E

第 8 页 共 9 页
Page 8 of 9

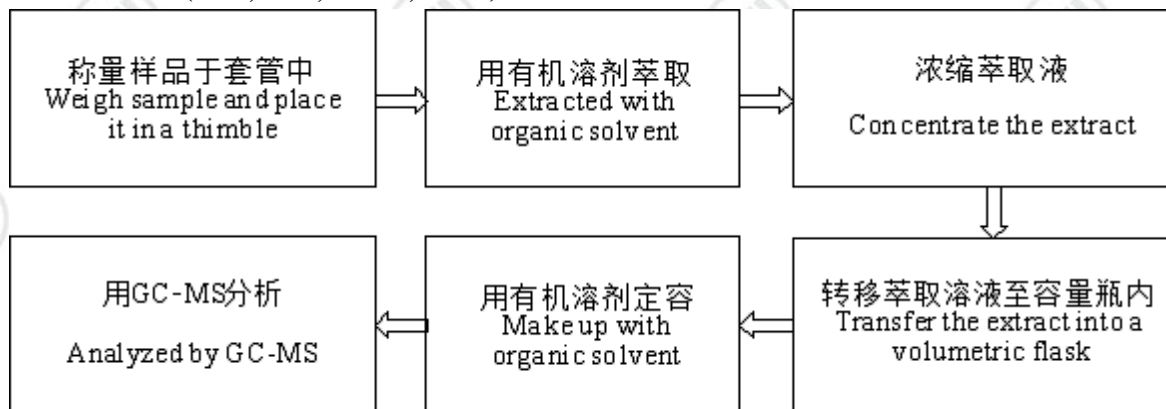
4. 多溴联苯(PBBs), 多溴二苯醚(PBDEs)

Polybrominated Biphenyls(PBBs) , Polybrominated Diphenyl Ethers(PBDEs)



5. 邻苯二甲酸酯(DBP, BBP, DEHP, DIBP)

Phthalates(DBP, BBP, DEHP, DIBP)

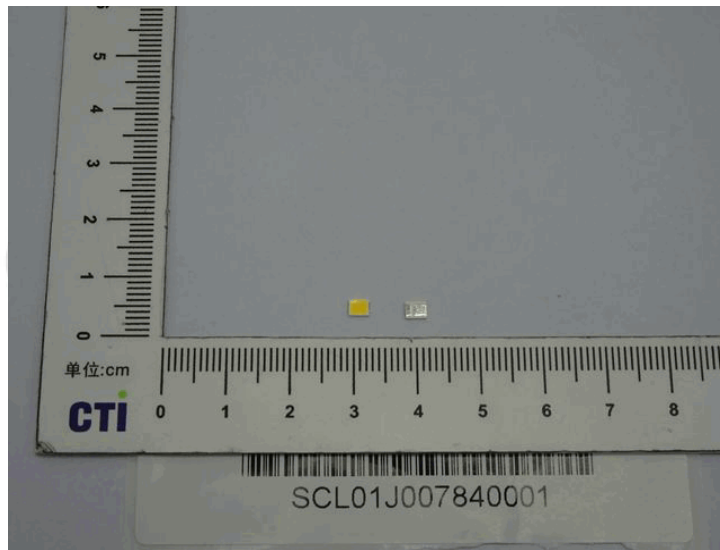


检测报告 Test Report

报告编号 SCL01J007840001E
Report No. SCL01J007840001E

第 9 页 共 9 页
Page 9 of 9

样品图片 Photo(s) of the sample(s)



报告结束
*** End of report ***

检测报告无批准人签字及加盖公司报告章无效，本报告检测结果仅对受测样品负责。未经CTI书面同意，不得部分复制本报告。

The test report is effective only with both signature and specialized stamp. The result(s) shown in this report refer only to the sample(s) tested. Without written approval of CTI, this report can't be reproduced except in full.